

1. THE LUCKENBOOTH BROOCH (J8x32) 3C 4C set)

- 1- 8 1s in prom hold (Lady on Man's left) dance reel of 3 with 2s (RSh to 2M) & end facing 3M
- 9-16 1s dance reel with 3s (RSh to 3M) ending with 1s dancing across to Men's side
- 17-24 1M casts up & 1L dn into centre & dance out Ladies side, 1M cast up & 1L dn to end 1M b'tw'n 2s facing dn & 1L+3s face up **as** 2s+3s dance R&L
- 25-32 2s+1s+3s set twice, 1s turn RH 1.3/4 times to 2nd places

2 INCHMICKERY (J5x32) 5C set

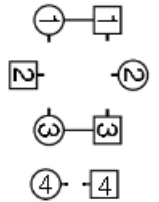
- 1- 8 1s+2s circle 4H round to left, 1s dance in & cast to 3rd place
- 9-16 1s dance RH across (Lady with 3s & Man with 4s), pass RSh & dance LH across with other couple
- 17-24 1L+2M **also** 1M+5L turn RH, 1L+5M **also** 1M+2L turn LH (1s end 3rd place own side)
- 25-32 1s dance in & cast to 5th place, 5s+1s circle 4H round to right. 2 3 4 5 1

3 THE RUTLAND REEL (R8x40) 3C (4C set)

- 1- 8 1s set & cast 1 place, 1s cross between 3s & cast up to 2nd place opposite sides
- 9-16 1s+2s dance Ladies Chain & end 1s facing down
- 17-24 Reel of 3 on sides, 1s giving RSh to 3s & 1s+3s 1/2 turn RH 2 3(1)
- 25-32 3s+1s dance Mens Chain & end 1L facing out with partner ready to follow her
- 33-40 1L followed by partner casts up & crosses to own side to end 1s in 2nd place own sides, 1s+3s circle 4H round to left

4 THE DUCHESS TREE (S8x32) 3C (4C set) Version 3

1-8 1s, 2s & 3s move in towards each other, 1s hold hands facing up, 2s take left hands facing up, 3s hold hands facing down. 1s cast, 2s cross up and cast, 3s cast up into reels of 3 on the sides. End: 1s in middle at top facing down, 3s at the bottom facing up, 2s, on their own, facing in on opposite sides).



9-10 all set (1s & 3s taking nearer hands);
11-12 6 hands round to the left halfway;
13-14 each M turn L on his right with both hands;
15-16 6 hands round to the left halfway;
17-20 1s2s right hands across;
21-24 1s cast and lead up WHILE 2s cross up and cast;
25-32 1s2s allemande.

5 THE PIPER & THE PENGUIN (R88) Sq.Set

1- 8 Ladies dance RSh round their corners, dance RH across ending in centre
9-16 Ladies dance LSh round their partners, dance LH across & back to places
17-24 Men dance RSh round their partners, dance RH across ending in centre
25-32 Men dance LSh round corners, dance LH across & back to places
33-40 1s & 3s turn partners RH 1.1/4 times, Men followed by partners dance out between side couples & back to places (1M thru 4s & 3M thru 2s)
41-48 1s+3s dance R&L
49-64 2s+4s repeat bars 33-48
65-72 Ladies dance in turning right about to dance out, cast clockwise to opposite Lady's place
73-80 Men dance in turning left about to dance out, cast anticlockwise to opposite places
81-88 All turn partners RH 1.1/4 times into prom hold, Promenade anticlockwise 1/2 way round to original places

6 BRATACH BANA (R8x32) 3C (4C set) John Drewry Bon Accord Bk

- 1- 8 1s turn RH & cast 1 place, 1s dance LSh round 1st corners to 2nd place opposite side facing 2nd corners
9-16 1s dance 1/2 Reel of 3 on the sides & dance 1/2 Reel of 3 across (1M with 3s at top, 1L with the 2s)
17-24 1s turn LH, turn 3rd crnrs RH (1st crnr person) & pass RSh to turn 4th crnr RH ending in 2nd pl own side in prom hold with 4th crnr
25-32 1s+4th crnrs Prom diag across (pass RSh) to diag opp crnr & 1/2 turn to end 1s in 2nd pl opp side, 1s dance 1/2 Diag R&L (M up, L dn) to end in 2nd pl

7 FAREWELL TO BALFOUR ROAD (J1x96) 5C

- 1- 8 1s+2s circle 4H round and back
9-16 1s+2s Set&Link; 1s+3s Set&Link
17-24 *2s start* while 1s+4s+5s dance mirror reels of 3 on sides (1s in/down to start)
25-32 1s set, cross down RH to 4th place (4s step up); 1s set, cross down LH to 5th place (5s step up)
New top couple start every 16 bars. Repeat until 1s back in 1st place, they stand for 16 bars while 5s continue bars 17-32 ending back in 5th place

8 THE ORCHARDS OF CO. ARMAGH (S3x32) 3C set

- 1- 8 1M leading 2M+3M also 3L leading 2L+1L chase clockwise 1/2 round to opposite sides (4 bars). All set, 1s+3s turn partners 3/4 RH into line up/down (Men facing down)
9-12 3s+1s dance 1/2 reel of 4. Bar 12: 1M+3L pass LSH to face 2s (1M+2M and 3L+2L facing), 1L+3M remain in centre at top/bottom
13-16 1M+3L+2s dance 1/2 reel of 4 across. Bar 16: 1M and 3L pass LSh to face partners up/down set
17-24 1s+3s dance 1/2 reel of 4, 1M+3L pass LSh to face own partners. 3s+1s set, Petronella turn to own sides. 321
25-32 2s followed by 1s dance up to top, cast, 2s to 3rd place, 1s to 2nd place (4 bars). 3s+1s+2s turn partners 2H

9 . NEVER AT SEA (R3x48) or (R6x48) 6C Set J Haddow

4s & 5s & 6s start on opp sides

1- 8 1s cross RH & cast to 2nd place, cross LH & cast to 3rd place **while** 6s cross RH & cast to 5th place, cross LH & cast to 4th place

9-16 1M+6L Prom hold dance reel of 3 with 4s (pass 4M LSh to start) **while** 6M+1L dance reel of 3 with 3s (pass 3M LSh) end 1s in 3rd place side by side facing up & 6s in 4th place facing down ready for:..

17-24 1s & 6s dance reflection reels on sides dancing up/down between 3s/4s to start

25-32 1s+6s dance R&L ending with 1s facing up & 6s facing down

33-36 End couples cross RH **while** cple in 2nd+3rd pl **also** cple in 4th+5th pl dance 1/2 RH across & all (1st+2ndpl, 3rd+4thpl, 5th+6thpl) change pl LH on side

37-40 Repeat bars 33-36

40-44 Repeat bars 33-36

45-48 All turn partners RH 5 4 6(1)(3)(2)

Dance 3x to end 6 5 4(3)(2)(1) or 6 times to end 1 2 3(4)(5)(6) (



(Routing map for 33 - 44:)

10 PELORUS JACK (J8x32) 3C (4C set)

1- 8 1s cross RH & cast 1 place, dance RH across with 3s & 1s end with Man facing his 1st corner with his partner behind him

9-16 1s dance Alternating Tandem 1/2 reel of 3 with 1st corners, 1s dance Alternating Tandem 1/2 reel with 2nd corners

17-24 1s dance Alternating Tandem 1/2 reels of 3 with Ladies 1st corner (psth), 1s dance Alternating Tandem 1/2 reel with Ladies 2nd corner (psth)

25-32 1M followed by partner dance into LH across with 2s, 1s retain LH & 1/2 turn to own sides & 2s+1s+3s set

===== **INTERVAL** =====

11 THE BON VIVEUR (M-(S2x32+R2x32)) Sq.Set I & C
Brockbank ianbrockbank.com/dances

- 1- 8 All circle 8H round & back
9-16 1s+3s dance Men's Chain finish with Ladies facing out
17-28 All dance Schiehallion reels (12 bars) to finish 1 place
clockwise from starting place 4 1 2 3
29-32 All birl (or turn) partners RH

12 A FULWOOD FAVOURITE (J8x32) 3C (4C set) L Morris
Ribble Valley Bk

- 1- 8 1s dance in & cast to 2nd place, 1s dance 1/2 Fig of 8 (L up
round 2s, M down round 3s). 2 1 3
9-16 1s dance RSh reels on opposite sides, (1M RSh to 2L, 1L RSh
to 3M)
17-24 1s dance 1/2 Fig of 8 (1M round 2s, 1L round 3s), 1s RH
across (1L with 2s, 1M with 3s)
25-32 2s+1s+3s circle 6H round & back
rec

13 THE RECUMBENT STONE (R5x48) 5C set

- 1- 8 2s+3s+4s circle 6H round & back **while** 1s & 5s wait for 4
bars then turn RH for 4 bars
9-16 1s & 3s dance Fig of 8 round couples below them
17-24 1s & 3s dancing between couple below turn them with
nearer hand 1.1/2 times, cast down behind next couple & lead
up LH to face 1st corners
25-32 1s & 3s dance 1/2 diag reel of 4 with 1st corners, pass RSh
& 1/2 diagonal reel of 4 with 2nd corners to end passing RSh
to face 3rd corners
33-40 1s & 3s dance 1/2 diag reel with 3rd crnrs & pass RSh to
face each other up/down in centre (Ladies face down & Men
up) & 1/2 reel of 4 in centre
41-48 3s & 1s turn RH 1.1/4 times to 2nd/4th places (opp side) &
3M passes 1L RSh to dance 1/2 Figs of 8 across round couples
on their left (Lady up, Man down) to end 5 3 4 1 2

14 THE THURSDAY DRAM (S3x32) 3C Set Marion Bennett

1- 8 1s cross RH, cast off 2 places (2s+3s step up on bars 3-4), 1s cross RH and cast up to 1st place (2s+3s step down on bars 7-8)

9-16 1s+2s dance Poussette. 123

17-24 1s+2s+3s dance the Slip Knot:

17-22 All 3 couples dance first 6 bars of standard knot

23-24 1s (at bottom) turn LH to own side while 3s+2s dance ½

LH across to end on own side. 231

25-32 All set, all turn partner 2H (4 bars), all set. 231

15 POSTIE'S JIG (J4x32) 4C set R Clowes Ormskirk 5

1- 8 1s & 4s set & cast in 1 place, 1s & 4s dance 1/2 Figs of 8 round new end couples

9-12 1M+4M & 1L+4L cross (men making an arch) & turn corners with free hand to face up/down

13-16 1s+4s dance down/up (couple dancing up make the arch) & turn corners

17-24 Repeat bars 9-16 from new pstns

25-32 1s+4s dance 1/2 R&L, turn partner RH

**16 FISHERMAN'S REEL (R5x32) 5C Sq.Set Sue Petyt
Dunblane Holiday**

5 couple square set, 5s in centre facing, 5M back to 4s, 5L back to 2s

1- 8 1s+2s+3s+4s circle 8H round & back **while** 5s turn RH once & LH 1.1/2 times to end 5M facing 2s & 5L facing 4s

9-16 5M+2s **also** 5L+4s dance RH across, 5s pass LSh & dance LH across with next couple anticlockwise (M with 1s & L with 3s)

17-24 5M dances reel of 3 with 1s+2s (in prom hold) giving RSh to 2s **while** 5L reels with 3s+4s giving RSh to 4s

25-32 All take ptrns in prom hold, 5s change pl with 1s RSh, 1s pass 4s RSh, 4s pass 3s RSh, 3s pass 2s RSh & 2s end in centre facing each other

**17 FATHER CONNELLY'S JIG (J4x64) 4C set John Drewry
Donside Bk**

1- 8 1s+2s Set & Rotate : -

` Set, rotate singly & dance on 1 place clockwise, change places RH on sides & dance on 1 place to own sides (1s in 2nd pl)

9-16 1s dance 1/2 diag R&L with 1st corners **while** 2nd corners set & change places diagonally RH, 1s dance 1/2 reels of 3 on opposite sides

17-24 1s dance 1/2 diag R&L with 3rd corner (pstn) **while** 2nd corners (pstn) set & change places diagonally, 1s dance 1/2 reels of 3 on own sides

25-32 1s dance reels of 3 across Lady with 2s & Man with 3s

33-40 1s cross down between 3s, 1L casts up round 3M & 1M casts down round 4L, 1s change places LH in centre & cast to 3rd place own sides

41-56 3s+1s+4s (bottom 3 couples) repeat bars 9-24

57-64 All (or bottom 3 couples only) circle 8(6)H round & back

18 THE WATER OF LEITH (S4x32) 4 Couple Set John Wilkinson Edinburgh 90th Anniv

1- 8 1s+3s set. 1L dances down, casts up round 2M into middle facing down **as** 1M dances across, casts round 2L into middle facing up **while** 3s dance same round 4s. 1s+3s change places RH with partner into line of 4 in middle (M face down, L face up)

9-16 1s+3s dance reel of 4 in middle

17-20 1s+2s **also** 3s+4s dance RH across

21-24 1M followed by 1L casts round 2L to 2nd place own sides **as** 3M followed by 3L casts round 4L to 4th place (2s+4s step up 23-24)

25-32 1s+4s dance Espagnole

` 25-26 1s+4s cross (Ladies lead across RH passing between Men) with Ladies changing places RH

` 27-28 1s+4s cross back (Men lead across RH between Ladies) with Men changing places RH

` 29-32 4s turn RH **as** 1s turn LH

19 MAIRI'S WEDDING (R8x40) 3C (4C set) Cosh 22 SCDs

- 1- 8 1s turn RH & cast to 2nd place, 1s turn LH to face 1st corners
9-16 1s dance 1/2 diagonal reel of 4 with 1st corners, 1s dance 1/2 diagonal reel with 2nd corners
17-24 1s dance 1/2 diagonal reel with 3rd corner (pstns), 1/2 diagonal reel with 4th corner (pstns)
25-32 1s dance reel of 3 across (Lady with 2s, Man with 3s - LSh to 1st corner)
33-40 2s+1s+3s circle 6H round & back

20 THE MONTGOMERIES' RANT (R8x32) 3C (4C set) Castle Menzies RSCDS Bk 10

- 1- 8 1s cross RH & cast down to 2nd place, cross LH & 1L casts up **while** 1M casts down
9-16 1s dance reels of 3 across, 1L with 2s & 1M with 3s
17-24 1s with nearer hands joined (Lady on Mans left) set to 2L & turn inwards to set to 3M, set to 3L & turn inward & set to 2M
25-32 2s+1s+3s dance reels of 3 on opposite sides 1s giving RSh to 2nd corner, 1s cross RH to 2nd place own sides

===== **EXTRAS** =====

EX1 JEAN MARTIN OF ABERDEEN (S3x32) 3C set

- 1- 8 1s turn RH & cast 1 pl, all circle 6H round 3/4 way to left & end in lines of 3 across (Ladies face down & Men up)
9-16 All set & change places with partner RH, all circle 6H round 3/4 way to left & end in middle facing up. 3 1 2
17-24 All dance Allemande
25-32 1s+3s dance the Bourrel to end 2 3 1 : -
` 1M+3L set advg, 3/4 turn 2H & twirl to end BtoB (up/down middle L facing up & M down) **while** 1L+3M chase anticl'wise 1/2 way to face prtnr
` 1s+3s set to partners & turn 2H to own sides having changed places

EX2 SCOTT MEIKLE (R4x32) 4C set

Alice McLean

Laurieston Coll 1

- 1- 8 1s cross RH & cast to 2nd place, 1s dance 1/2 Fig of 8 round
2s
- 9-16 1s+3s dance RH across, LH back
- 17-24 1L followed by 3L dance Tandem reel of 3 across with 2s
(LSh to 2M) & 1s end 3rd pl **while** 3M followed by 1M dance
reel of 3 with 4s (LSh to 4L) & 3s end in 2nd pl 2 3 1 4
- 25-32 1s+4s dance 1/2 R&L, turn partners RH 1.1/2 times 2 3 4 1

EX3 SHIFTIN' BOBBINS (R8x32) 3C (4C set)

R Clowes

Ormskirk 6

- 1- 8 1s cross RH to double triangle position with 2s+3s & set, 1s
cast up to top & dance down until they are between 2s & 3s
- 9-16 1L dances RH across with 2M+3M **while** 1M dances LH
across with 2L+3L, 1s followed by 2s+3s dance down centre
- 17-24 3s followed by 2s+1s dance up & 3s+2s cast down to places,
1L dances LH across with 2M+3M **while** 1M dances RH across
with 2L+3L
- 25-32 1s dance up to top & cast down to 2nd place opposite side,
1s dance 1/2 Fig of 8 around 2s to end in 2nd place on own
sides